

Contents



## **Diskers** (Shareware and Registered Version Help)

Introduction

How to Use the Program

Registration Information

System Requirements

What is Shareware

Getting Support and Help

Copyright Notice

Note: If your already Registered

**(e.g. How to Order)**

Other Fineware Products

## Introduction

### **Diskers**



### **A regular Copy Cat!**

An easy and user friendly way to create copies of diskettes or for copying files to and from diskettes.

**Disk Duplicating:** This is accomplished by first creating an image file of the diskette on your local hard disk. All image files are stored within the application's directory and are identified by their three character [.DK~] file extension.

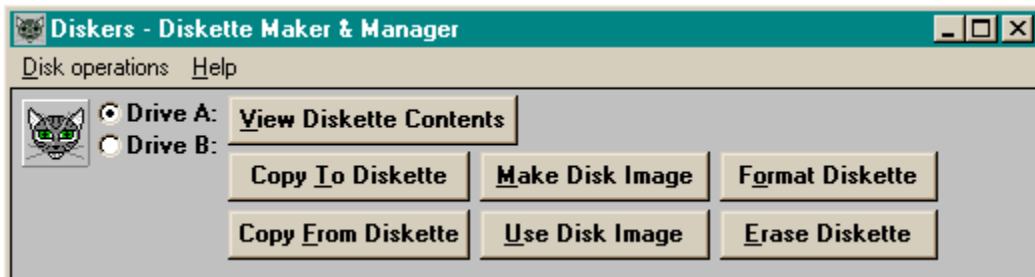
You may store as many image files as physical disk space allows. Once these images are created, you may use **Diskers** to re-create the original diskettes. **Note:** **Diskers** does not support the new Microsoft DMF format at this time.

**File Copying:** Diskers makes it easy to copy files to and from diskettes and includes some powerful features to simplify the operation including the ability to mirror the hard disk directory structure and the use of the COMPRESS utility to store more files on the diskette.

**Diskette Viewing:** Useful for quickly seeing the contents of a diskette. Built in version information display shows embedded version information on program files (.EXE) and library modules (.DLL & .VBX) even when the files are stored in compressed format (Typical for Installation Diskettes).

## How to Use the Program

All operations are started from the control panel shown below. Use the mouse to display information about each individual control button.



## Registration Information

See [Ordering Information](#)

### Features and benefits of Registered Version:

- Elimination of all references to registration and other "nag" screens.
- Additional updates, corrections and bug fixes implemented after the release of the shareware version.
- You will be alerted to new releases when available.
- You will also receive information concerning the shareware version of Fineware's Nationally known Windows utility **Space Hound**. **Note:** See [Space Hound Information](#)

## Ordering Information

Registration for **DISKERS** is **\$19.95 plus \$2 shipping and handling (\$4 outside North America)**.  
You may either pay by check, money order, or via credit card.

Credit cards accepted: **Visa, MasterCard or American Express** [Read This.](#)

**Via Telephone Direct** from Fineware. **(800) 544-1740** or (405) 947-1740

**Via FAX Direct** from Fineware. (405) 942-7819

**Via e-mail Direct** from Fineware.

### E-Mail Addresses

#### AI Meadows - **Fineware Systems**

CompuServe.....70650,2022

Prodigy.....BBTK05A

America Online.....VB AL

Microsoft Network..FINEWARE

Internet.....70650.2022@CompuServe.Com

**Web Site: <http://www.fineware.com>**

Order Form **Direct from Fineware** using US Mail

**Available:** Visa, MasterCard, American Express, Check or Money Order

See Site License Ordering for multi-unit sales.

Ordering Online via **CompuServe SWReg Service**

**Available:** Conveniently billed to your CompuServe Account

PsL Ordering Information **Credit Card Orders ONLY**

**Available:** 800 Number, Fax, MasterCard, Visa, Amex, or Discover

See About PsL

P. & A. Shareware **Ordering in Japan**

# Order Form

## DISKERS Ver 1.50

**Note:** Select "File-Print Topic" from the menu bar to **print** this form.

You can order **DISKERS** mail with payment by **check** , **money order** or **credit card**.

Name: \_\_\_\_\_

Company: \_\_\_\_\_

Street: \_\_\_\_\_

Street: \_\_\_\_\_

City: \_\_\_\_\_

State: \_\_\_\_\_ ZIP: \_\_\_\_\_

Country: \_\_\_\_\_

Telephone Number: \_\_\_\_\_

Credit Card Type: Visa MasterCard American Express  
(circle one)

Credit Card Number: \_\_\_\_\_

Expiration Date: \_\_\_\_\_

Signature: \_\_\_\_\_

(Unless otherwise requested we ship a 3.5" HD disk)

Diskers	\$19.95	_____
Oklahoma residents add 8.375% sales tax		_____
Shipping/Handling - US or Canada	\$2.00	_____
Shipping/Handling - Outside of US/Canada	\$4.00	_____

Total in US Funds drawn on a US Bank \_\_\_\_\_

**Make checks payable to: Fineware Systems**

**Mail to:**

Fineware Systems  
P.O. Box 75776  
Oklahoma City, Ok. 73147

By the way, where did you initially hear about **DISKERS**?  
\_\_\_\_\_ (If CompuServe, which forum)

## Program Icon

This will display the program's About screen when Double\_Clicked with the mouse.

Close Button



Pressing this button with the mouse terminates the program.



## Print Button

Note: This is only available when the file being displayed contains embedded version information.

Pressing this button with the mouse sends the contents of the Version Information List to the current default printer.

You will then have an option of printing only the currently highlighted file information or all information from files in the currently selected directory.

## Definition of Shareware

Shareware distribution gives users a chance to try software before buying it. If you try a Shareware program and continue using it, you are expected to register. Individual programs differ on details -- some request registration while others require it, some specify a maximum trial period. With registration, you get anything from the simple right to continue using the software to an updated program with printed manual.

Copyright laws apply to both Shareware and commercial software, and the copyright holder retains all rights, with a few specific exceptions as stated below. Shareware authors are accomplished programmers, just like commercial authors, and the programs are of comparable quality. (In both cases, there are good programs and bad ones!) The main difference is in the method of distribution. The author specifically grants the right to copy and distribute the software, either to all and sundry or to a specific group. For example, some authors require written permission before a commercial disk vendor may copy their Shareware.

Shareware is a distribution method, not a type of software. You should find software that suits your needs and pocketbook, whether it's commercial or Shareware. The Shareware system makes fitting your needs easier, because you can try before you buy. And because the overhead is low, prices are low also. Shareware has the ultimate money-back guarantee -- if you don't use the product, you don't pay for it.

## System Requirements

**Diskers** requires Windows 3.1 or later or Windows for Work groups 3.11 or later. I have tried to provide keyboard support for most functions but a mouse or other pointing device is highly recommended.

A PC (386 processor or above) with at least 4 MB of RAM.

## Product Support

Technical support is currently available at no charge by sending electronic mail to:

### **Al Meadows (Fineware Systems)**

**70650,2022 on CompuServe**  
**70650.2022@CompuServe.com on Internet**  
**fineware@fineware.com on Internet**  
**BBTK05A on Prodigy**  
**VB AL on America On line**

I prefer to handle support via e-mail but realize this is not possible for some users. Therefore, I also provide software support via fax at (405) 942-7819.

Technical support also available by sending US Mail to Fineware Systems , P.O. Box 75776, Oklahoma City, Ok 73147.

Registered users have priority but I will try to answer all questions.

## Copyright Notice

**Copyright © 1994-1995 Fineware Systems and Al Meadows . All rights reserved.**

## Information of Space Hound

**Space Hound** is Fineware Systems' **flagship** product. It has received international recognition as a top notch Windows Utility. It's been mentioned in the pages of Windows Magazine, Windows Sources, PC Connect, ZiffNet Threads, and CompuServe Magazine.

As a bonus, you will receive a copy of the shareware version of **Space Hound** with your paid registration to **Peeper**. Also Available! Novell Netware Edition of Space Hound

### Space Hound features:

The overall mission of the program is to ***sniff out*** wasted space on your hard disk that is duplicated, obsolete, and simply forgotten. The freely distributable shareware version has this as it's primary goal. The **Pro** version adds **additional** functionality for dealing with what is found.

**Directory Map:** Similar to the Windows File Manager in appearance, its main purpose is to provide a convenient method of evaluating disk storage usage within the directory plus the combined storage of all nested levels below.

**Extensions Display:** An organizational tool which allows you to group all files which share the same file extension name.

**Duplicates Display:** Allows for searches over one or more physical disk volumes for duplicate files. You may search for exact duplicates or only matching file names.

**Files Display:** Allows for search across multiple disk volumes for multiple file pattern mask.

From these basic displays, you have a number of additional mini-functions available from each display.

#### Common functions available from all displays Include:

- Hard copy reports of complete or just partial information.
- Files can be compared at the bit-level.
- Version and file identification information extraction
- Files may be deleted from the hard disk utilizing any display
- Files may be copied or moved from any display

#### Specific functions of the **Directory Map Display** include:

- Printable Directory Map may be started at any level, not just root
- Storage totals at each directory plus nested sub directories
- File counts for each directory plus nested sub directories in the printed report
- Displays can be saved and later reloaded for further evaluation and action

#### Specific functions of the **Extensions Display** include:

- Collects all extension types in a single pass
- Printed report including all extensions or a single extension only
- Storage totals and file counts by extension

#### Specific functions of the **Duplicates Display** include:

- 3 distinct duplicate search functions
  - 1. Search for duplicate names. This is useful for finding files which have the same

name but are different in size such as a DLL at version 1.0 and a DLL at version 1.1 might be.

- 2. Search for duplicate names that are identical. This is probably the best search to run first because it limits the number of duplicate files to those which are truly identical to other files.
- 3. Search for duplicate files. This variation doesn't care what a file is called, it searches using CRC checking to identify duplicates.
- Collects all duplicates in a single pass
- Printed report including all duplicates found or on single duplicate name only
- Storage totals and file counts displayed by duplicate name
- Each search allows for the use of a filter which can limit the search to a set of specific file names or wild card patterns (Example: \*.txt or Memo????.\*)

From these basic displays, you have a number of additional functions available from each display.

**Additional features:** A file viewer with support for over 20 file formats including ASCII, HEX, PCX, TIF, GIF, BMP, WMF, ICON, Microsoft Word, WordPerfect, AMI PRO, xBase, Paradox, Lotus, Excel, ZIP, LZH, Quattro Pro, MetaFiles, Q&A, Windows Write, and Microsoft Works. (New viewers are added from time to time and support for newer file formats updated as soon as possible.) Enhanced version control information display for files containing version information.

## Site Licensing

**Site License pricing is applicable to orders of 10 or more copies only.** Quantities under 10 are priced at the standard rate (see [order form](#)).

For quantities of 10 or more, the price is \$150.00 + \$7 per additional license over 10.

Example: a 50 user site license would be  $\$150.00 + (\$7 \times 40) = \$430.00$ .

**Note:** Only a single master diskette containing the program will be distributed on a site license unless requested otherwise. If you desire additional diskettes, please add \$1 per diskette desired.



## Ordering Online

You may order using CompuServe's Software Registration Service:  
enter **GO SWREG** at the ! prompt and follow the menus.

**DISKERS's** registration id is **5469**. The indicated price will be \$19.95 plus \$2 shipping and handling (\$4 outside US, Canada, and Mexico).

**Note:** Ordering On line via CompuServe is an exceptionally easy way for those users who live outside the United States to pay for Shareware.

## Credit Card Requirements

**When ordering with a credit card, it is important that you include the following information.**

- Credit Card Number
- Expiration Date
- Name as it appears on the card
- Address that your statements are delivered to (**Note:** This will be a requirement for all credit card transactions in the future when the card itself cannot be imprinted. It is for your own protection.)
- Address that the product is to be delivered to if different than your billing address.

## Upgrading to Latest Version

**Diskers** will be continually upgraded to add features and correct programming errors as they are detected. In addition, changes to the underlying operating systems may make some features of the program redundant while creating new capabilities that can be enhanced by the program.

### **The policy of Fineware Systems on upgrades to registered users is as follows:**

If you are already a registered user of **Diskers**, you will be able to update your existing registered version to the latest edition by simply downloading the most recent version while retaining the program's registered features. As program errors and bugs are detected and resolved, Fineware will make available additional releases on the main commercial services such as CompuServe, America Online, and Prodigy.

You may update your existing copy to the new version as long as the version number on the new release is 1.99 or less.

To update an existing installation, simply replace all existing files with any which are included within the zipped file.

If you do not have access to these two commercial online services, then we must provide you with diskettes via regular US Mail.

There is a \$5.00 Shipping/Handling charge for this service. You will receive a complete set of installation disks for the latest release.

Site license holders should contact Fineware Systems for a price quote.

## About PsL

PsL is short for "Public (software) Library". PsL has been distributing public domain and shareware software on disks since 1982. PsL has been recommended in every major (PC) computer magazine, many computer books, and many non-computer publications such as NY Times.

PsL offers a shareware registration order taking service primarily for the benefit of shareware authors and their customers. The service began in January 1989 and presently takes orders for many hundreds of shareware authors.

PsL can take orders via our 800#, non-800#, CIS#, and FAX#. Their operators are available from 7:00 a.m. to 7:00 p.m. CST Monday-Friday and normally from 7:00 a.m. to 4:00 p.m. on weekends. They provide an easy and direct way to register shareware via CompuServe - via e-mail. FAX and credit cards are the primary means of registration for overseas customers.

**Please note** that support and usability problems **are not to be reported to PsL**. They do not have support technicians who are trained about the usage and capabilities of Peeper and simply refer such calls to me anyway "after" charging me a service charge.

## PsL Ordering Information

You can order with **MasterCard, Visa, Amex,** or **Discover** from Public (software) Library by calling **1-(800) 2424-PsL** or **1-(713) 524-6394** or by **FAX** to **1-(713) 524-6398** or by **CompuServe E-mail** to **71355,470**. You can also mail credit card orders to PsL at **P.O.Box 35705, Houston, TX 77235-5705**.

**THE ABOVE NUMBERS ARE FOR ORDERS ONLY. NOT TECHNICAL SUPPORT.**

PsL Order Form

**Any questions about the status of the shipment of the order, refunds, registration options, product details, technical support, volume discounts, dealer pricing, site licenses, etc., must be directed to Fineware Systems .**

To insure that you get the latest version, PsL will notify us the day of your order and we will ship the product directly to you.

# PsL Order Form

PsL Order Form (ver 1.50)

**Note:** Select "File-Print Topic" from the menu bar to print this form.

You can order **DISKERS** by Phone, Mail or FAX with payment by credit card.

## PsL Product# 11875

Name: \_\_\_\_\_

Company: \_\_\_\_\_

Street: \_\_\_\_\_

Street: \_\_\_\_\_

City: \_\_\_\_\_

State: \_\_\_\_\_ ZIP: \_\_\_\_\_

Country: \_\_\_\_\_

Telephone Number: \_\_\_\_\_

Credit Card Type: \_\_\_\_\_

Credit Card Number: \_\_\_\_\_

Expiration Date: \_\_\_\_\_

Signature: \_\_\_\_\_

**(Unless otherwise requested we ship a 3.5" HD disk)**

<b>DISKERS</b>	19.95	_____
Texas residents add 8.25% sales tax		_____
Shipping/Handling - US or Canada	2.00	_____
Shipping/Handling - Outside of US/Canada	4.00	_____

Total in US Funds: \_\_\_\_\_

### FAX or Mail

Public (software) Library

P.O. Box 35705

Houston, TX 77235-5705

Orders: 1-800-2424-PsL or 1-713-524-6394

FAX Orders: 1-713-524-6398

By the way, where did you obtain the shareware version  
of **DISKERS**: \_\_\_\_\_

## Netware edition of Space Hound

An extended version of Space Hound suitable for "sniffing out" wasted space on your Novell server is available now. It includes additional columns of data on each display which show file ownership, last updated by, and 4 netware specific date fields including accessed date, archived date, etc.

Contact [Fineware Systems](#) for more information.

## Make New Image Button

Press this button to create a new diskette image on your hard disk.



## Peeper

PEEPER is a Multiple Document File Viewer.

View over 21 file formats including ASCII, HEX, PCX, TIF, GIF, BMP, WMF, ICON, MS Word, WordPerfect, AMI PRO, xBase, Paradox, Lotus, XL, ZIP, LZH, Quattro Pro, MetaFiles, Q&A, Windows Write, and Microsoft Works. Extract Version identification info from Windows DLLs, EXEs, and other Windows file types.

Embedded file information can be viewed. Supports Windows Clipboard. Display up to 9 files at a time.

Jun95 **Windows Magazine** rated it as **SUPERIOR SHAREWARE**.

## Other Fineware Systems Products

Space Hound's registration id is **2594**. The indicated price will be \$37.95 which includes FREE shipping and handling.

Peeper's registration id is **3925**. The indicated price will be \$22.95 plus \$2 shipping and handling (\$4 outside North America).

## Desktop Computer

This image simply represents your local desktop PC. You will see the moving documents move towards or away from your PC as the copy process completes. **Note:** The original source material is never changed or deleted.

## Diskette

This image simply represents diskette. You will see the moving documents move towards or away from diskette as the copy process completes. **Note:** The original source material is never changed or deleted.

## Stop Operations

You may terminate a copy process at any time by pressing this button.

## Progress Indicator

The moving document is a graphic representation which shows the relative movement of the data (either PC towards Diskette or Diskette towards PC) and provides an indicator on the completion percentage.

## Percent Complete

Decimal representation of the percent of the operation that has completed.

## Disk Sector

Current disk sector on the diskette that is being accessed.



## Use Disk Image

Use this button to create a diskette with a previously saved disk image.

## Diskette Drive Option Buttons

You must select the diskette drive that is to be used. Most PCs only have a single diskette drive which will be **DRIVE A**.

## Show Program Information

Pressing this button displays the program's information screen. This is also called the "About Box".

## Meow!

If you have a sound card installed, pressing this button will play back the sound of the program's mascot.

## Disk Image Name

This is where the disk image is identified. The name must be Alphanumeric and not more than 8 characters in length.

## Continue

This begins the diskette to disk image copy process.

## Cancel Make Disk Image

This aborts the process without performing any operations.

## Existing Disk Images Files

This is a list of all existing disk images files. Select the one desired and press the continue button to begin the process of transferring the image from the hard disk to the diskette,

**Note:** The image will remain on the hard disk after the process so that you can make other copies later on.



## Continue Use Image

Press this button to begin the operation.

## Cancel Use Image

Press this button to abort the operation

## P. & A. Shareware

**This program can be registered locally in Japan. For more detail and information on prices, etc. contact:**

**P. & A. Shareware  
1-3-6-2 Kamisunacho  
Tachikawa, Tokyo 190 Japan**

**Tel: 0425-35-9901  
Fax: 0425-35-9902**

**Nifty: PAF02461**

## Making a Diskette Image

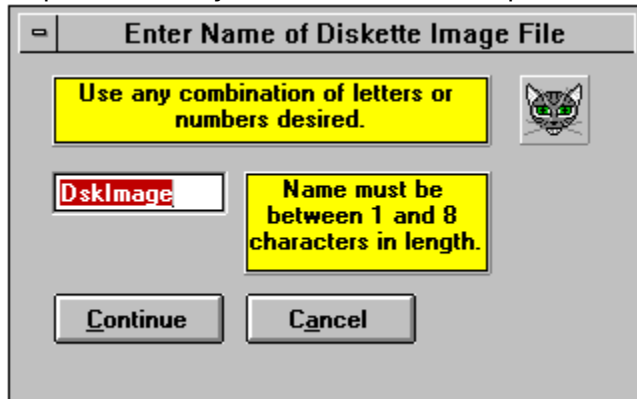
### Creating a Diskette Image

Use the mouse to select the source diskette drive. Most computers only have a single diskette drive and

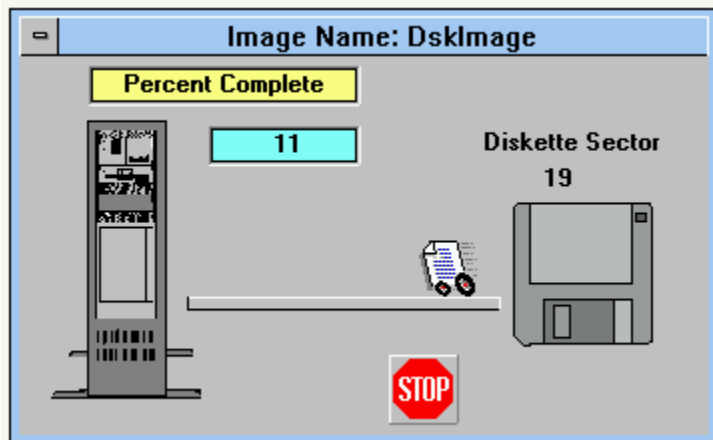
it is drive A. Once you have selected the source drive, press

**Make Disk Image**

This is the disk image naming screen. The default name is always DskImage but you may override this by simply typing in the name you desire. The name should be as descriptive as possible but you are limited to 8 alphanumeric characters.



Progress of the operation is displayed. You may interrupt the process at any time by pressing the Stop Sign button.



## Using a Diskette Image

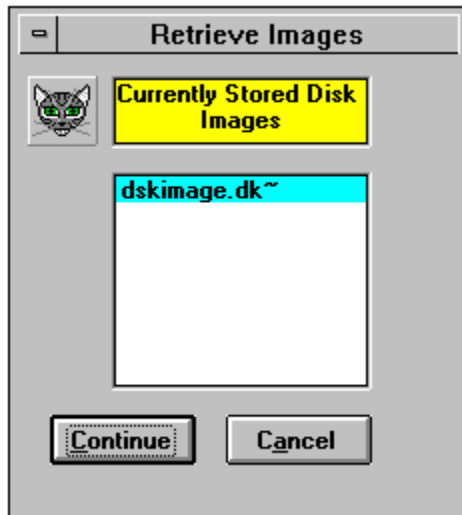
### Using a Diskette Image

Use the mouse to select the target diskette drive. Most computers only have a single diskette drive and

it is drive A. Once you have selected the target drive, press

**Use Disk Image**

This is the diskette image selection screen. The list box will contain all of the currently stored disk image files. Note: Disk image files are always identified by the use of the .DK~ file extension and must remain within the application's directory.



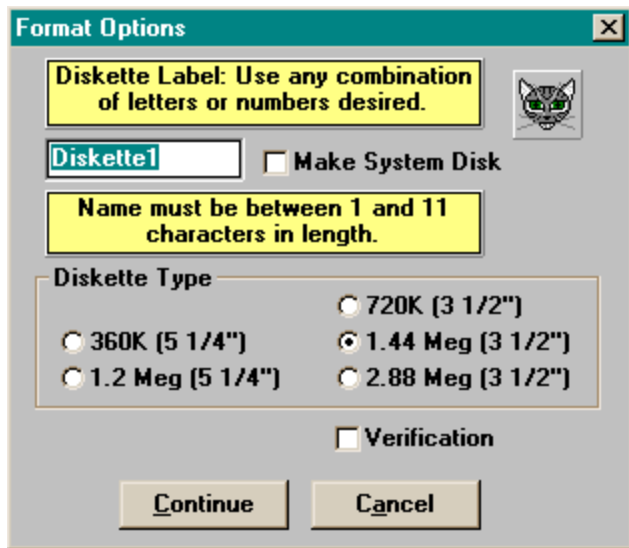
Progress of the operation is displayed in a similar manner as the Make Diskette Image function.

## Select Diskette Drive

Use these option buttons to select the desired diskette drive.

## Format Diskette

Use this button to perform a full format of the diskette using the controls pictured below.



The image shows a Windows-style dialog box titled "Format Options". It contains several controls for formatting a diskette:

- A yellow message box: "Diskette Label: Use any combination of letters or numbers desired." with a small cat icon to its right.
- A text input field containing "Diskette1" and a checkbox labeled "Make System Disk".
- Another yellow message box: "Name must be between 1 and 11 characters in length."
- A section titled "Diskette Type" with five radio button options:
  - 720K (3 1/2")
  - 360K (5 1/4")
  - 1.44 Meg (3 1/2")
  - 1.2 Meg (5 1/4")
  - 2.88 Meg (3 1/2")
- A checkbox labeled "Verification".
- Two buttons at the bottom: "Continue" and "Cancel".

## Erase Diskette

Use this button to erase all existing files and directories stored on the diskette.

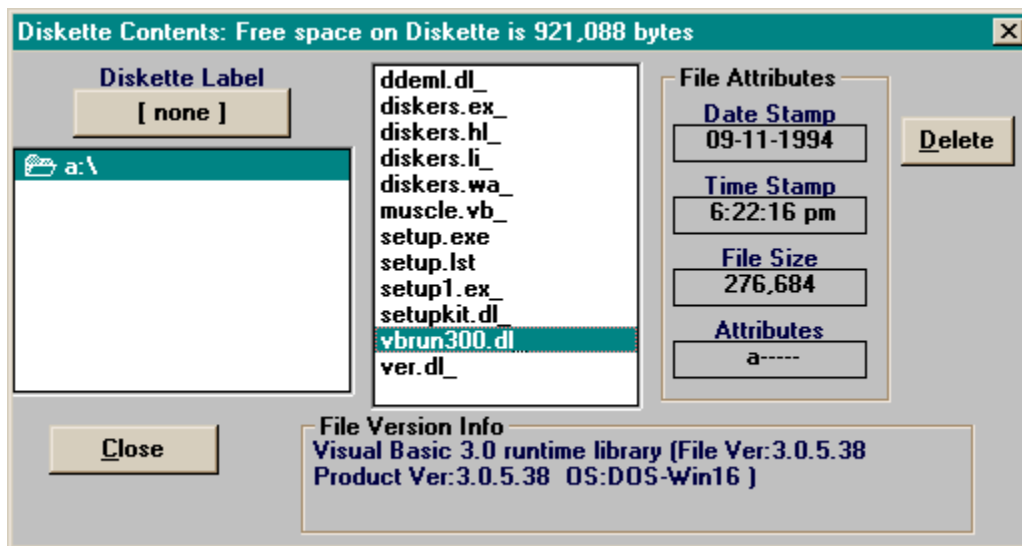


## View Diskette Contents

You can quickly view the contents of an existing diskette. When you highlight an individual file, the file's attributes (date, size, etc) is displayed to the right of the file list box. When you highlight a file which contains embedded version information, this will be displayed (see example of VBRUN300.DL\_ in the graphic below.

When you highlight a group of files, the combined size is displayed instead. You can highlight multiple files by using these techniques:

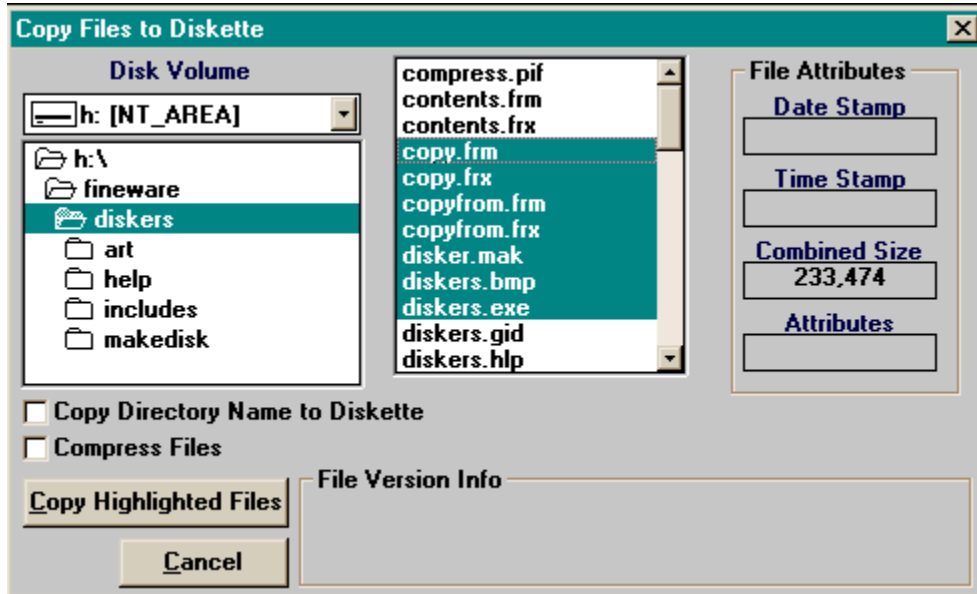
- use the mouse to drag across the desired contiguous file names.
- use the mouse and the Shift Key to select a range of files.
- use the mouse and the Ctrl Key to select non-contiguous files.



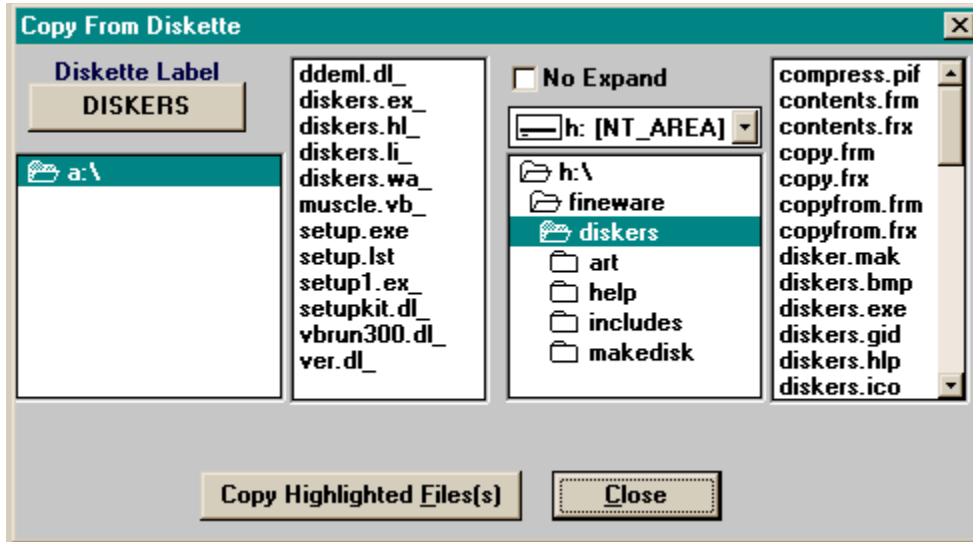
**Note:** The highlighted file in this example has been compressed using the Microsoft COMPRESS utility. It is normal for files compressed in this manner to have the last character of the file name extension changed to an underscore character.

## Copy To Diskette

Use this screen to copy files to your diskette. Note: The ability to re-create the hard disk directory structure and the use of the Compress Files option is provided by check mark boxes shown below the directory list. Use the mouse to select each of these areas in the image map to learn of the use and function of these features.



## Copy From Diskette



## Delete Highlighted Files

Use this button to delete highlighted files on the diskette.

## File Attributes

Shows information about the currently highlighted file. If multiple files are highlighted, then only the size field will have information and this will be the combined size of all highlighted files.

## Version Information

Available only if the highlighted file contains embedded version information.

## Label Diskette

Use this button to attach a label to the diskette or to change the existing label.

## Directory Contents

Displays the directory structure on the diskette. Use it to navigate between various directory levels. This example only has a root directory (a:\) and no sub-directories.



## File List

Listbox containing all of the files in the currently selected directory. Use the mouse or mouse & keyboard to select individual files or groups of files.

## Close Display

This closes the current display window.

## Select Source Drive

Use this control to select the disk drive that contains the files you wish to copy.

## Source Directory

Use this directory list to select the directory which contains the files you wish to copy.

Cancel

Closes the current Window.

## Copy Directory Names

It is often helpful to re-create the hard drive directory storage when using **Diskers** to copy files to and from an office machine and a home machine. In the example shown, selecting this option would create a **diskers directory** within a **fineware directory** on the diskette (if they did not already exist) before performing the copy function. The copy itself will place the files within the directory structure created.

## Compress Files

**Diskers** includes the capability to create **compressed** files on the diskette when the copy operation is performed. This allows you to store more files on a single diskette than would otherwise be possible. **Diskers** will automatically uncompress files when it copies them from diskette to your hard disk.

### Definition and background on Compressed Files

Microsoft uses a program called Compress to squeeze a greater number of files within a given amount of disk space. While compressed, these files cannot be opened or used normally although embedded version information can be seen. The Compress utility is normally used on Installation diskettes where space is at a premium and version information is needed.

The Compress utility is included with Diskers. Microsoft allows this program to be freely distributed. Also included is a COMPRESS.PIF (Program Information File) file which allows the program (which is still a DOS character mode application) to operate in the background without disturbing your Windows environment. Note: You can use the EXPAND utility to uncompress files that have been compressed using **Diskers** if **Diskers** is not available. Use the -r parameter as follows:

```
C:\Windows\Expand.exe -r TheFile.TX_
```

**Warning:** When the Compress Utility is used, the last character of the file extension is converted to an underscore character. For example: Letter.doc is changed to letter.do\_ when compressed. This can present a problem if you have files whose name's differ only by the last character. For example: Letter.xx1 and Letter.xx2 would both be called Letter.xx\_ when compressed and the second file copied would wipe out the existing one.

## Copy Highlighted Files

Press this button to begin the copy operation.



## Target Drive

Use this control to select the disk drive that is to receive the copied files.

## Target Directory

Use this to select the target directory for the copied files.

## Files Within Target Directory

Shown for informational purposes only.

## No Expand

Diskers used the Microsoft COMPRESS and EXPAND utilities to allow you to place more data on a diskette. The option to compress is selected when files are copied to a diskette. Un-compression is done automatically. In some instances, you may wish to copy files which are compressed yet leave them in their compressed state afterwards. This option provides that capability for you.

## Glossary



### **A**

AI Meadows  
alphanumeric

### **F**

Fineware Systems

### **I**

image file

### **P**

PsL

### **S**

sniff out

### **T**

top notch

**Fineware Systems**

Fineware Systems

PO Box 75776

Oklahoma City, OK 73147

## **AI Meadows**

Custom programming services available.

**top notch**

According to Ziff-Davis's shareware reviewer Preston Gralla.



**sniff out**

Basis for the program's name.

**PsL**

Public (software) Library

P.O. Box 35705

Houston, TX 77235-5705

**image file**

A single large file which contains all of the data from a source diskette. These images can ONLY be read by this program.

**alphanumeric**  
A-Z, 0-9



